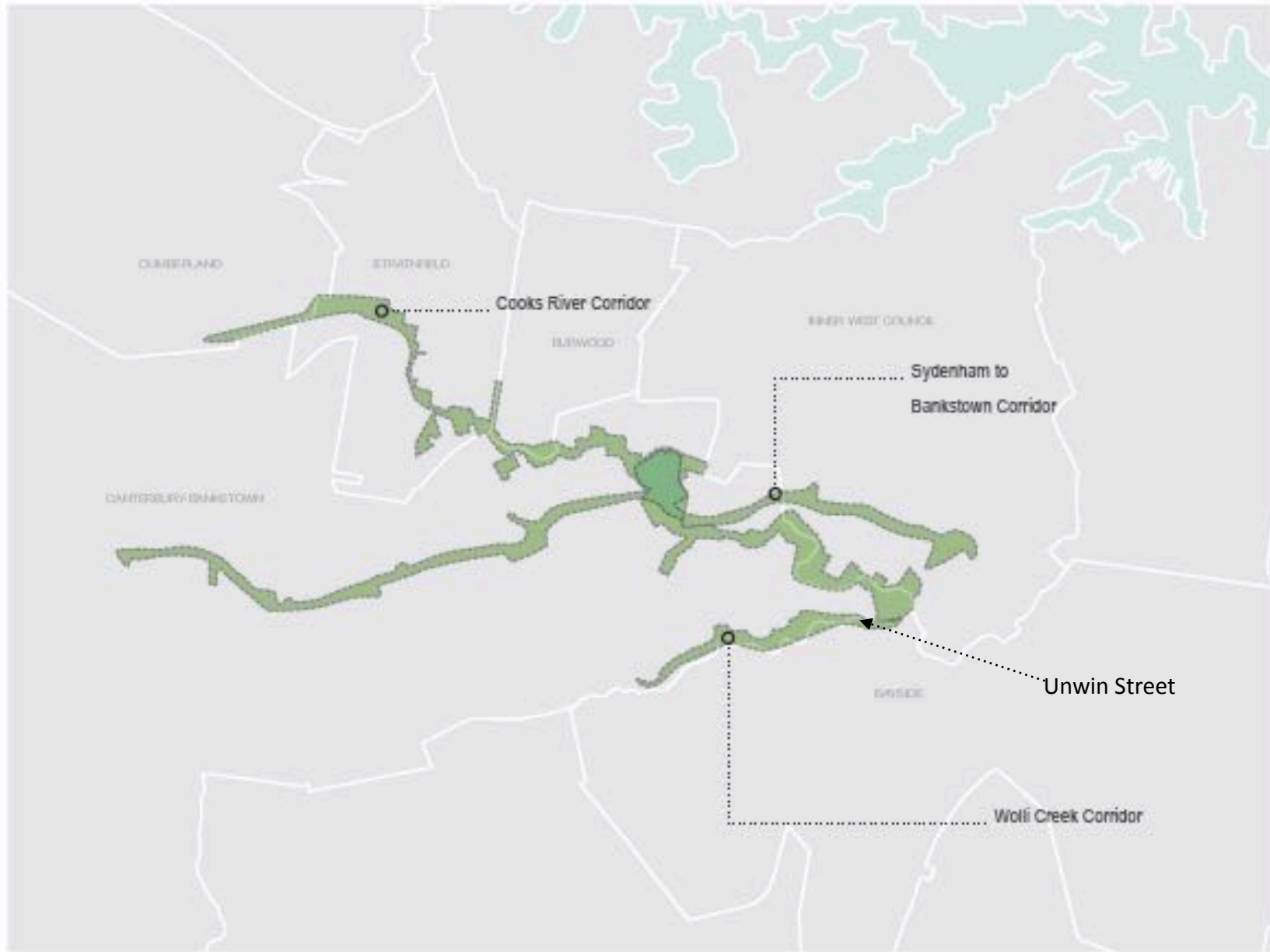


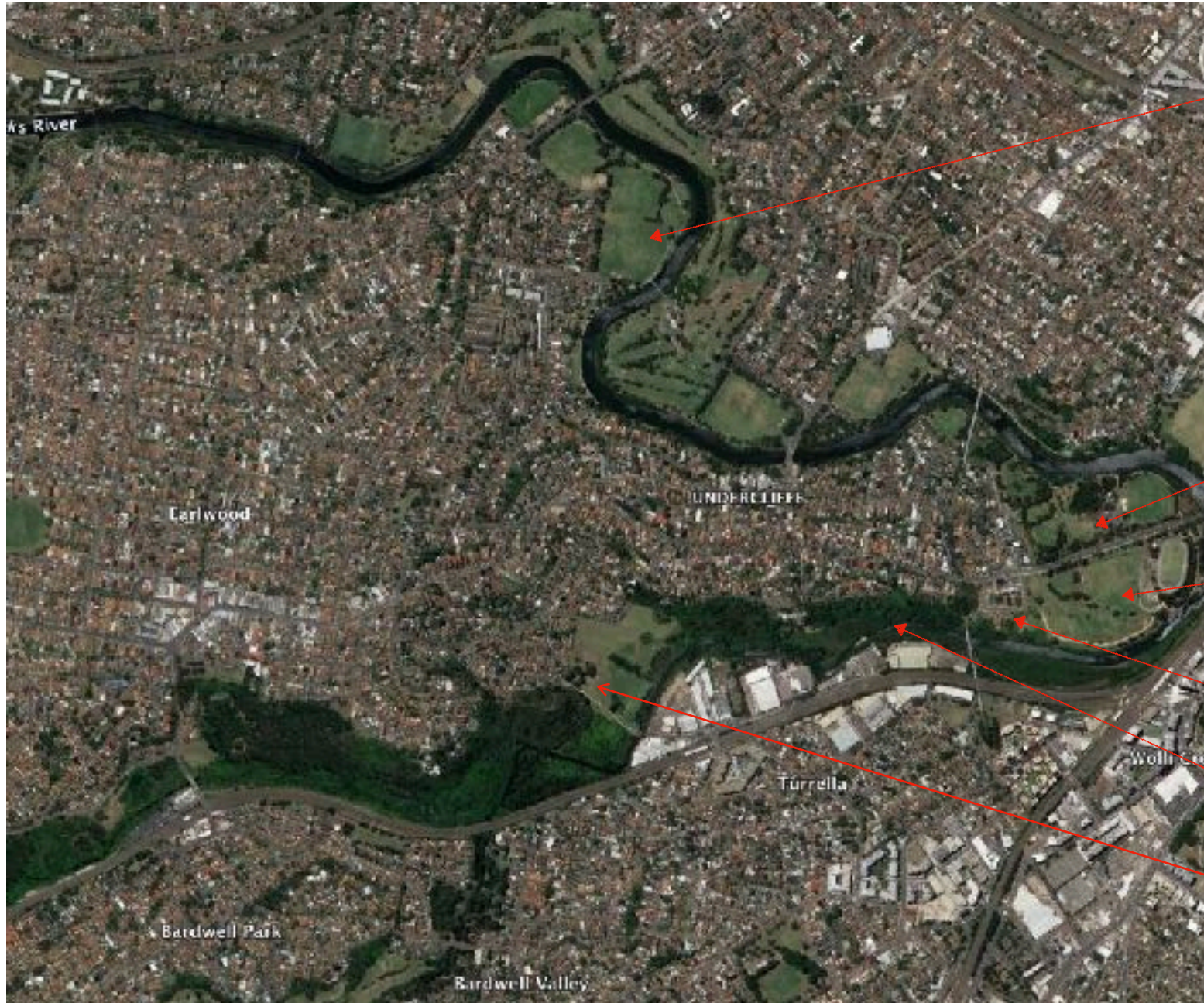
## **The Concept: Turn Unwin St into a 'Green Street' to link Waterworth Park and Wolli Creek Regional Park:**

- **Dedicate the vacant blocks in the street (currently held by Planning) to preserve green space by avoiding development for residential use.**
- **Add no.s 2,4,6 Unwin St to Waterworth Park and use them to install a raingarden/wetland below Unwin St, with a footbridge crossing from Waterworth.**
- **Restore low heath vegetation on 16-18 Bayview Ave through to Unwin St.**
- **Revegetate no.s 14,16,18 Unwin St with mixed plantings of species local to the Regional Park, with low-growing heath species at street frontage.**
- **Install information panels on the street frontage.**
- **Introduce street tree plantings up both sides of Unwin St.**
- **Assist local residents to make their gardens bush-supportive or at least bush-friendly.**
- **Increase vegetation cover on Waterworth Park to provide stepping stones for wildlife movement.**
- **For what is needed and who is involved go [here](#). To sign a supporting petition please go to <https://www.change.org/UnwinGreenStreet>**

## The Canterbury-Bankstown Green Corridors



## Where the Corridors Meet



Cooks River Corridor

Gough Whitlam Park

Waterworth Park

Unwin Street

Wolli Creek  
Regional Park

Wolli Creek Corridor

### Allocation of OSL-held land



★  
Land owned by the  
Office of Strategic Lands  
(NSW Government)

Two blocks to  
NPWS for  
Regional Park  
16-18 Bayview

Three blocks to CBCity  
Council for native  
revegetation  
14-18 Unwin St

Three blocks to CBCity  
Council for addition to  
Waterworth Park  
2-6 Unwin St

?One block to  
Sydney Water  
22 Unwin St

**Looking up Unwin Street  
- now and as envisioned**



**Looking down Unwin Street  
- now and as envisioned**

