

VALLEY TALK

The Two Valley Trail follows the Cooks River and Wolli Creek.

Along the trail, there are lots of **landforms**. Some of them are shown on the page of photos.

Activity 1: Tick the photo of the **landforms** that you saw during your walk (see separate sheet).

Activity 2: Can you guess the name of the landforms described below?

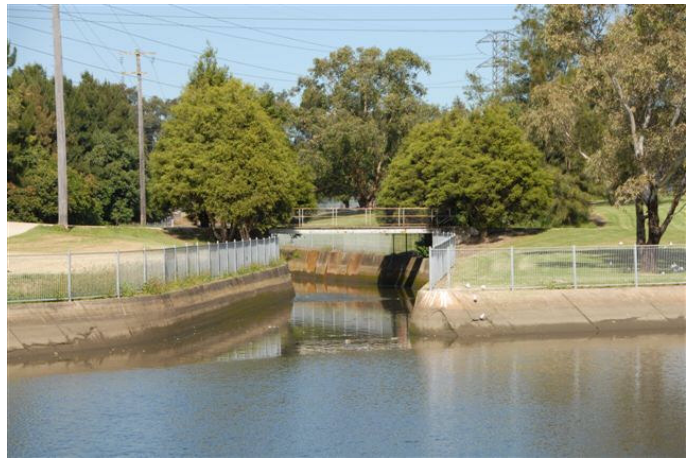
Name	Description
R _ _ _ _ _	A line of water flowing across land
_ _ _ _ L _ _ _	An area with higher land on two sides and water flowing through the middle
S _ _ _ _ _	A shallow section of a river where water flows quickly over exposed rocks
_ S _ _ N _	Land in a river completely surrounded by water
_ _ _ F F	A steep slope
W _ _ _ _ _ _ _	An area of land next to a river that is wet for much of the year
W _ _ _ _ _ _ _ _ _	Where water falls over rocks from a higher level to a lower level
_ O _ _ _ _ _ E _ _ _ _ _	A section of rock that is further out than the rock above

Activity 3: Cup and Saucer Creek is a **tributary** or small creek that flows into the Cooks River.

The photos below show how it has changed over time.



Cup and Saucer Creek, 1901
Photo: Courtesy of Canterbury Council Local History Library. No. 020034.



Cup and Saucer Creek as a stormwater drain entering Cooks River, 2008
Photo: Ricc Rossi

Activity 2: List three differences between the two photos.

Activity 3: Which photo do you like more: 1901 or 2008?
Give two reasons why.
